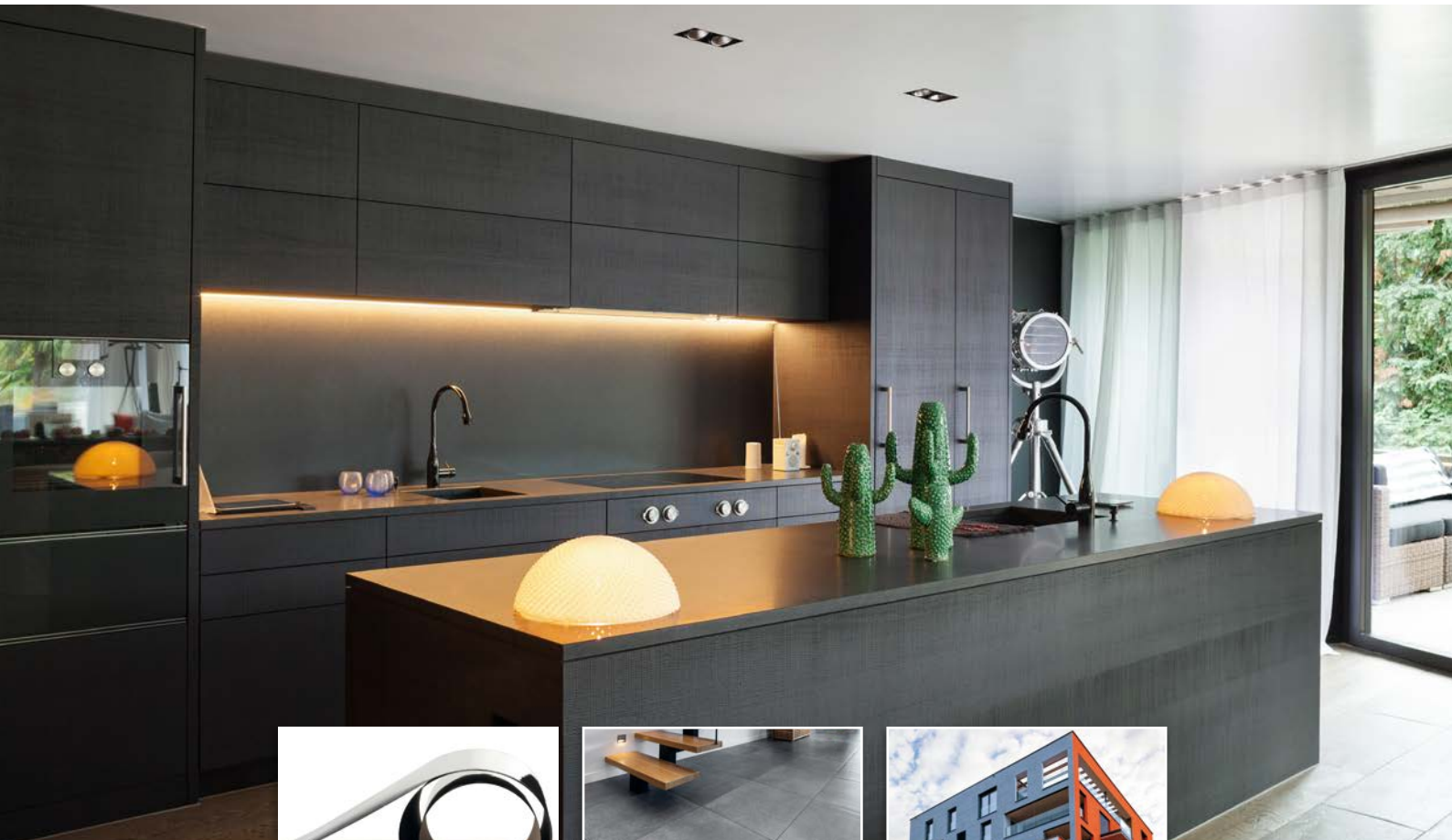


# High-End Surface Finishing KLEIBERIT HotCoating®



The revolution in surface finishing. A technology conquers the globe.



Years of research and development as well as decades of experience in the application of reactive PUR hotmelt adhesive systems were the basis and prerequisite for the successful international market launch of KLEIBERIT HotCoating® technology. In the meantime, more than 50 systems are in operation worldwide in the field of furniture element finishing, flooring and facade element coating as well as the finishing of roll goods for the wrapping of profiles.

## High-End Surface Finishing for Furniture Components

Furniture with a very high gloss index (> 90 GE) or a super matte finish (< 5 GE) are a current trend. KLEIBERIT HotCoating® technology enables very high color precision, impressive depth effects, super smooth haptics, high quality glossy finishes, and excellent resistance to scratches and impact. Above all, it has impressive processing properties in terms of drilling, milling and sawing the finished products, due to the outstanding chemical adhesion and flexibility of HotCoating.

### Features:

- High-quality varnished surfaces
- Anti-fingerprint
- Scratch-resistant
- UV-resistant
- Antibacterial – easy to clean, e.g. in kitchens, bathrooms and clinical areas
- Digital printing
- Fire protection
- Magnetic

## High-End Surface Finishing for Material in Rolls

New dimensions in roll-to-roll coating

- Working width: up to 1600 mm
- Line speed: up to 50 m/min
- Suitable for veneer, paper, thermoplastic foils and CPL
- Suitable for highest wear resistant HotCoating with corundum
- Excimer system for super matte surfaces
- Surface finishing in combination with digital printing and embossing
- Innovative application possibilities in indoor and outdoor areas



## High-End Surface Finishing for Flooring interior/exterior

HotCoating offers many benefits to industrial floor manufacturers and floor coating companies - it is a compact and easy-to-use technology that opens up a wide range of options for floors with top-quality properties:

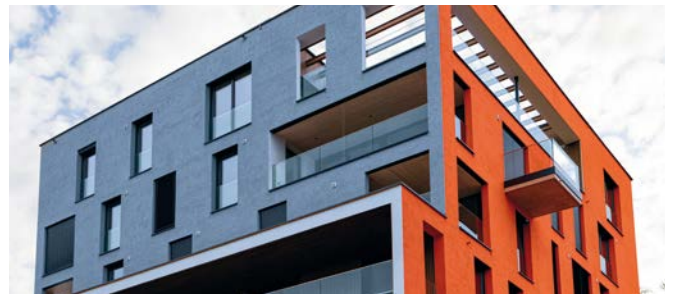
- Extremely high abrasion and impact resistance
- Embossed textures (Impress Touch)
- Pleasant warm and soft haptics and chemical resistance
- Perfect combination with digital printing



## High-End Surface Finishing for Facades

Facade and parapet elements finished with HotCoating defy wind and weather.

- Highly resistant compact panels
- Anti-fingerprint properties
- Variety of designs and surface structures
- Resistant to UV-light, frost, heat, and water
- Flame retardant, extremely scratch resistant, and easy to clean with additional anti-graffiti properties



## KLEIBERIT HotCoating® extreme

The combination of the proven KLEIBERIT HotCoating® technology with electron beam hardened TopCoat results in an extremely resistant coating structure. The well-known properties such as extremely high abrasion resistance and impact strength are complemented by very high scratch resistance and extreme stability, up to weather resistance. Components coated with this material can be used horizontally and offer a wide range of outdoor applications (countertops, facades, outdoor kitchens, decking).

- Super matte surface with pleasant, warm haptic
- Anti-fingerprint properties
- High scratch resistance according to DIN EN 438-2
- Resistance to dry heat (160 °C/ 20 min) "heated pot bottom"
- Exceptional abrasion resistance (AC5)
- Suitable as horizontal work surface according to DIN 68930 and AMK-MB 007
- UV stable

## KLEIBERIT HotCoating® Direct Top

HotCoating direct top is a laminating and wrapping material made with HotCoating. It combines the excellent properties and benefits that have proven themselves in many years of use. Serving both as a protective and a decorative layer, HotCoating provides many benefits besides cost savings, such as splitting resistance and flexibility. It is also ideal for customized small batch manufacturing.

### Ecological

- Based on renewable raw materials
- PVC free
- Formaldehyde/VOC free

### Natural

- Soft touch
- Super matt
- Pleasant, warm haptics due to optimal thermal conductivity

### Cost-effective

- Protective and decorative layer in one
- Adhesive serves as the base coat
- For use with state-of-the-art one-piece flow laminating systems

### Splitting resistance

- Water and temperature resistance

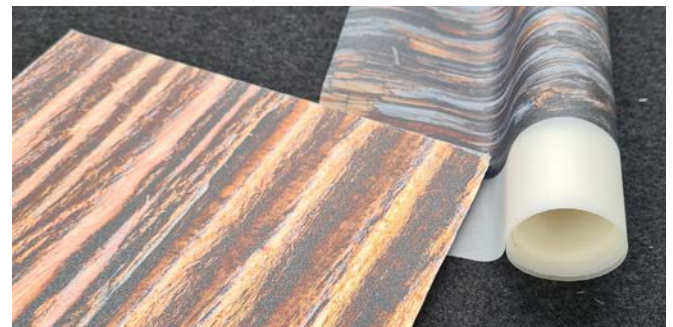


### High-end performance

- Lightfast (even for outdoor uses)
- Very high abrasion resistance
- Extraordinary flexibility = extremely good impact resistance

### Ideal processing

- Ideal processing
- Maximum value creation for companies and clients alike
- Stable and reliable printable surface
- Customizable + small batch lots possible with digital printing
- Wide range of lamination processes & laminating units for surfaces and edges
- Short-cycle presses, roller systems, slit nozzle systems, reactivation processes



Would you like expert advice or do you need more detailed information? Contact us directly by email, phone or visit our website.

KLEIBERIT SE & Co. KG  
Max-Becker-Str. 4  
76356 Weingarten/Germany  
Phone: +49 7244 62-0  
Fax: +49 7244 700-0  
Email: [info@kleiberit.com](mailto:info@kleiberit.com)  
[www.kleiberit.com](http://www.kleiberit.com)

