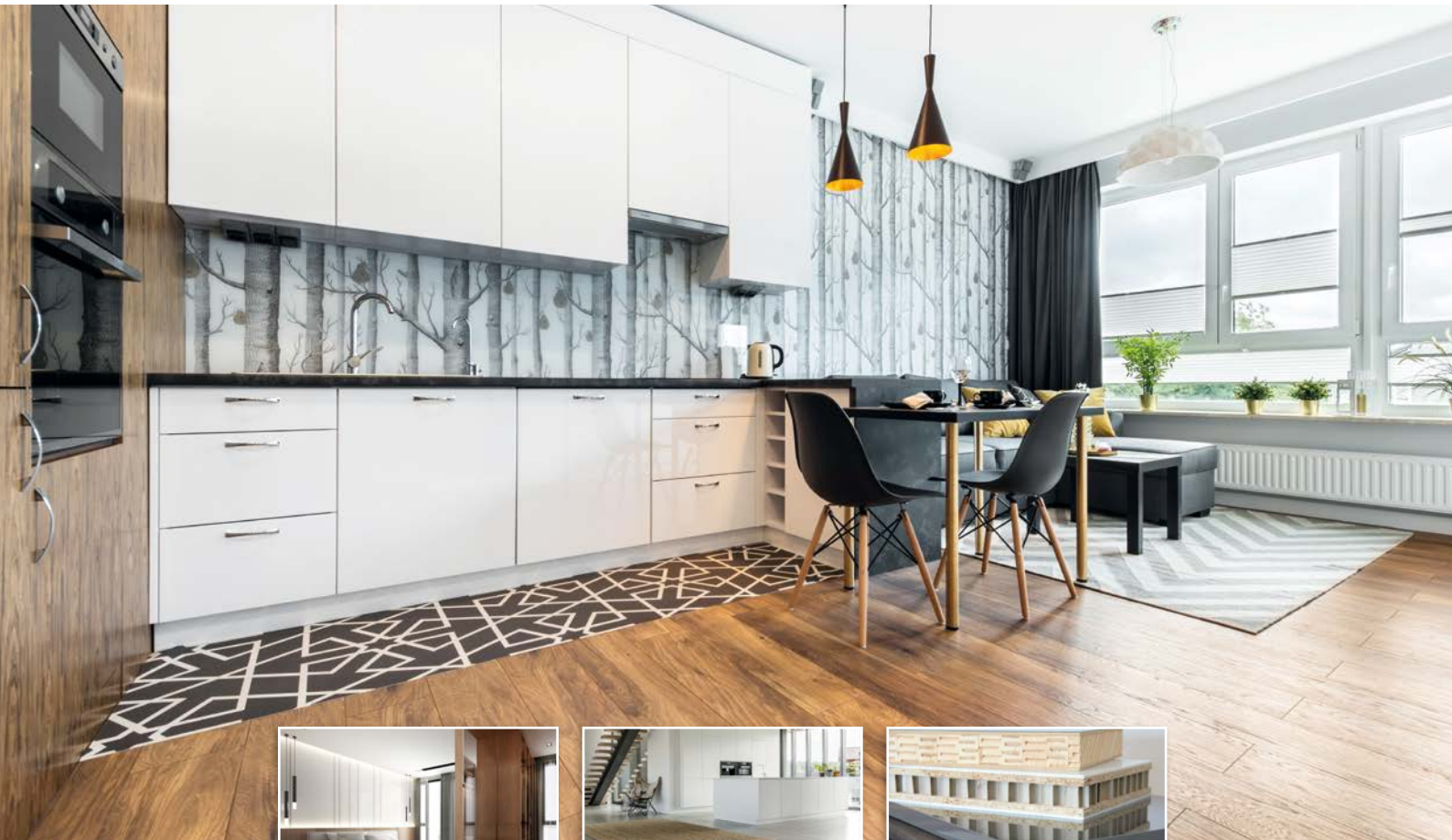


PUR Hotmelt Adhesives for **Flat Lamination**



Adhesive systems for furniture elements, LVT design floors and sandwich elements



Adhesives for Modular Furniture

Adhesive systems for kitchen and bathroom furniture as well as living room and bedroom furniture

Modular furniture has become indispensable in living rooms and bedrooms. They are everyday objects in the form of cabinets, dressers, or media consoles which can be found in almost every living room and bedroom. The furniture panels are often made of wood-based materials such as MDF or particleboard. To create a pleasing appearance, the surfaces are decoratively coated. Without suitable adhesives, this would not be possible. The same applies to assembly bonding. Durability, perfectly laminated surfaces or edging without a visible glue line define the demanding requirements profile of the adhesive. For a simple and efficient production process, the adhesive plays a key role. Especially for bathroom or kitchen furniture, the use of the right adhesive is crucial. This is the only way to produce furniture that will withstand external influences for many years. These are above all heat, moisture or steam and the elimination of mechanical stress.

Polyurethane-based adhesives offer by far the best performance in this respect. KLEIBERIT® micro-emission PUR hotmelts are especially being used more and more in this area. They enable increased occupational safety and are more environmentally friendly in production.

Laminating furniture fronts

Flat furniture panels made of wood-based materials such as particleboard or MDF are typical components of modular furniture. According to the appearance and quality requirements, the surfaces of the furniture panels are finished with decorative materials. Whether real wood veneers or plastic foils made of ABS, PMMA or PET - the variety of materials is vast. This offers furniture designers almost unlimited possibilities.

Flat lamination is used for:

- Furniture and fronts
- Furniture side panels
- Furniture back panels
- Shelves

Super matt or high-gloss decors, for example, are currently in trend. To achieve this visual effect, a mirror-smooth surface bonding is required. Especially with thin decor, this becomes a challenge, since the visual differences become noticeable with the slightest unevenness. In the long term, in terms of bonding it is also important to ensure excellent resistance to moisture, heat and steam.

ME Micro-Emission PUR Hotmelts for Flat Lamination

Product	Viscosity 120 °C [mPa·s]	Viscosity 140 °C [mPa·s]	Open time 20 °C [min]	Application examples/Characteristics
706.1.50	18,000	9,000	< 6	The specialist for high gloss bonding. Suitable for all laminates due to wide adhesion spectrum and good initial strength. IMO certified
706.2.50	12,000	6,000	< 4	Adhesive with medium open time and moderate initial strength, especially suitable for plastic foils of all types.
706.4.50	16,000	8,000	< 4	Adhesive with very high initial strength, especially suitable for HPL bonding. No bubbling. IMO certified
706.7.50	14,000	6,000	< 6	Especially suitable for bonding HPL and CPL, very good wetting behavior. Long open time, as well as good initial strength.
709.1.50	12,000	6,000	< 3	Adhesive with very good adhesion properties to inorganic materials such as metals, mineral materials, etc.
711.0.52	8,000	4,000	< 1	Adhesive for lamination of transparent foils. Processing possible via roller systems, as well as via slot die, short open time.
711.1.52	8,000	4,000	< 1	Adhesive for laminating transparent foils. Specially developed for processing via slot die, can also be processed via roller, short open time.
711.9.50		16,000*	< 5	Adhesive with a very high initial strength and at the same time long open time. Characterized by a very wide adhesion spectrum
716.4.50	5,000	2,500	< 8	Excellent for bonding thin foils and impact sound insulation, low application quantities can be realized
716.8.50	16,000	8,000	< 8	Suitable for bonding coverings containing plasticizers (e.g. LVT). Excellent adhesion to PVC and other plastics

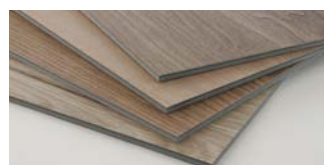
*at 160 °C

PUR Hotmelts for Flat Lamination

Product	Viscosity 120 °C [mPa·s]	Viscosity 140 °C [mPa·s]	Open time 20 °C [min]	Application examples/Characteristics
706.0.00	12,000	6,000	< 2	All-rounder with short open time, IMO certified
706.0.09	12,000	6,000	< 3	Good for bonding plastics, FDA conform
706.1.00	12,000	6,000	< 4	The all-rounder with excellent initial strength, IMO certified
706.4.00	35,000	15,000	< 4	Very high initial strength, for materials with high memory forces
706.7.00	20,000	9,000	< 5	Extreme high initial strength, especially for HPL bonding
706.9.00	30,000	20,000	< 5	Long open time, especially for pressure sensitive cores
709.3.00	8,000	4,000	< 3	The adhesive for high gloss, extremely high surface-smoothness
711.2.00	10,000	5,000	< 3	Plastics specialist for materials which are difficult to wet
711.3.00	12,000	6,000	< 3	For bonding of diffusion proof materials, no gassing/bubbling, IMO certified
711.9.00		16,000	< 5	High viscosity product with maximum initial strength
716.4.00	6,000	2,500	< 8	Excellent suitability for bonding thin foils and impact sound insulation, low application quantities can be realized
716.8.00	12,000	6,000	< 6	Suitable for bonding coverings containing plasticizers (e.g. LVT). Excellent adhesion to PVC and other plastics



high gloss



LVT flooring



sandwich panels



Complete Line

Cleaning products for roller systems

Product	Packaging	Application examples/Characteristics
760.3	5 kg / 20 kg	Cleaner in mini-flake form, easy to dose for daily cleaning of application equipment
761.8	20 kg / 136 kg	Proven cleaner in powder form for daily cleaning of application equipment

Cleaning products for premelting units

Product	Packaging	Application examples/Characteristics
761.6	18 kg / 50 kg / 180 kg	Cleaning of tank and drum melters, gear pumps and transport hoses, metal application units; combines the function of flushing cleaners like KLEIBERIT 761.7 and the intensive cleaner KLEIBERIT 826.0
761.7	15 kg / 150 kg	Cleaning of tank and drum melters, gear pumps and transport hoses, metal application units

Cleaning products for special applications

Product	Packaging	Application examples/Characteristics
816.0	4,5 kg	For storing the Teflon cheeks after daily use. Dissolves adhesive residue and prevents it from reacting
826.0	4,5 kg	Intensive cleaning liquid for removing cured adhesive residue using heat. Can also be used for cleaning steel rollers in application equipment

From thin high-gloss foils for the production of high-quality furniture elements to the bonding of LVT design floors and the production of sandwich elements for the caravan or door industry, we have the right product for you. We also offer tried-and-tested inline solutions that skilfully combine surface and edge bonding (e.g. Complete-Line process).

Our engineers have decades of experience in bonding a wide variety of material combinations. They are familiar with the machines and application methods on the market and are highly committed to developing tailor-made bonding processes together with our customers.

Would you like expert advice or do you need more detailed information? Work with us to find the right adhesive. Contact us directly by email, phone or visit our website.

KLEIBERIT SE & Co. KG
 Max-Becker-Str. 4
 76356 Weingarten/Germany
 Phone: +49 7244 62-0
 Fax: +49 7244 700-0
 Email: info@kleiberit.com
www.kleiberit.com

